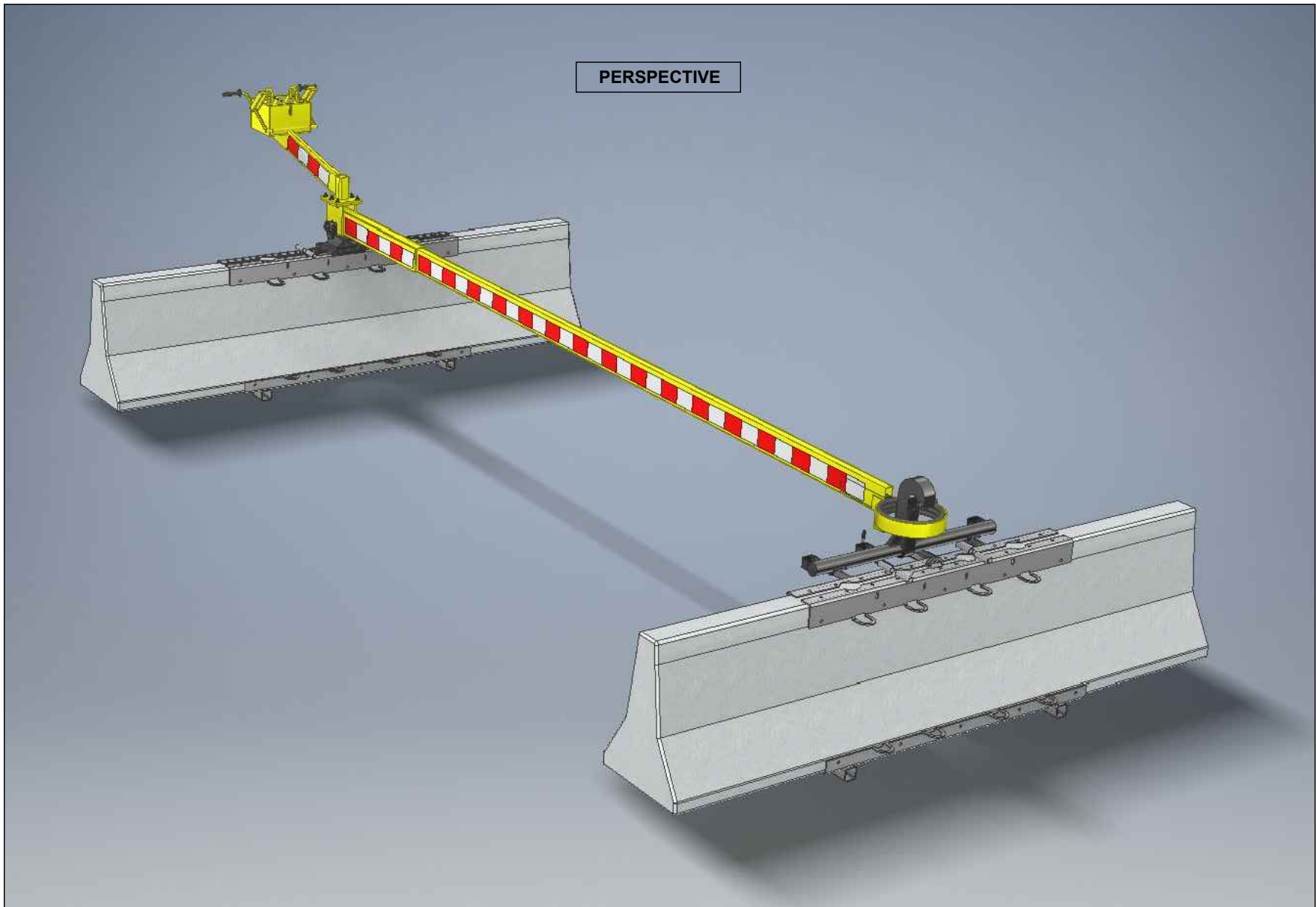


KIT BASED CRASH BEAM - MODEL KBVB-MAN (MANUALLY OPERATED AND MOBILE)

ASTM F2656-07 M50 (K12) CERTIFIED - STOPS 15,000 LB. VEHICLE AT 50 MPH IMPACT

APPROVED ON DoD ANTI-RAM LIST, BARRIER CERTIFIED UP TO 34 FEET CLEAR SPAN LENGTHS

PERSPECTIVE



BARRIER1 SYSTEMS, INC.

8015 THORNDIKE ROAD
GREENSBORO, NC 27409
(336) 617-8478 (336) 617-8471 FAX
mlamore@barrier1.us www.barrier1.us

THE DRAWINGS AND INFORMATION CONTAINED HEREIN ARE
PROPRIETARY AND CONFIDENTIAL AND FOR USE BY ONLY
PERSONS WORKING ON PROJECT WITH BARRIER1 SYSTEMS,
INC. DO NOT COPY OR REPRODUCE. ALL RIGHTS RESERVED.

MANUALLY OPERATED
DROP ARM CRASH BEAM
PREASSEMBLED & MOBILE

SAMPLE DRAWINGS

SHEET: 1 OF 6

20190226-06-PD

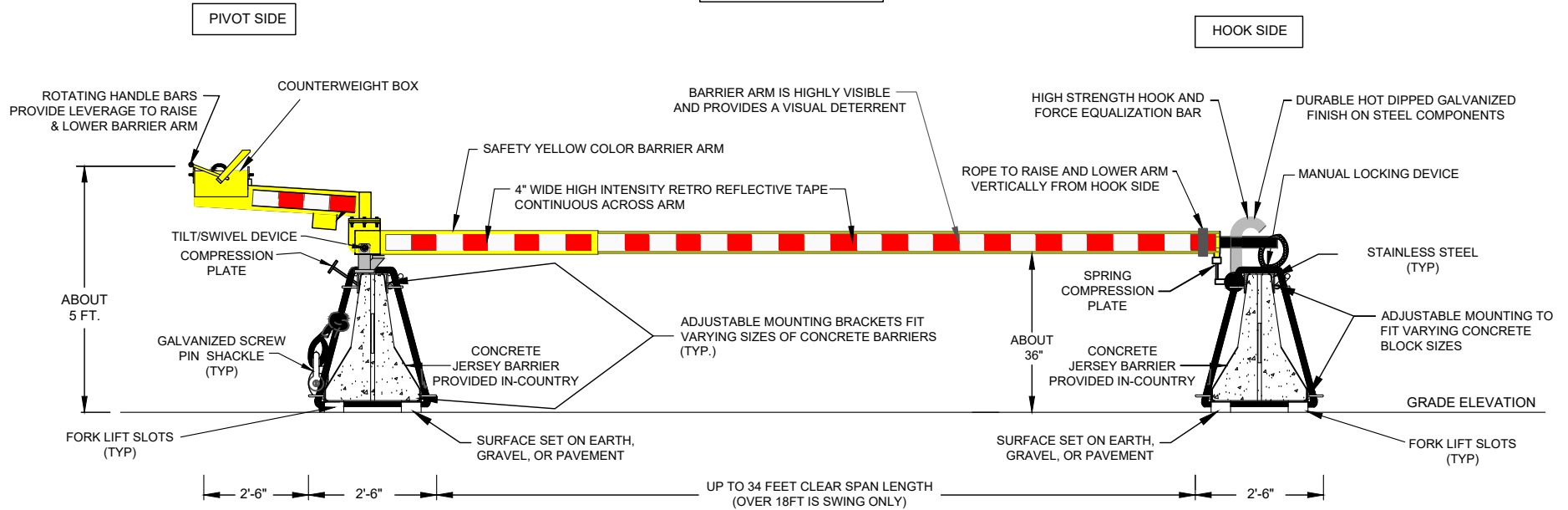
SCALE: N.T.S.

KIT BASED CRASH BEAM - MODEL KBVB-MAN (MANUALLY OPERATED AND MOBILE)

ASTM F2656-07 M50 (K12) CERTIFIED - STOPS 15,000 LB. VEHICLE AT 50 MPH IMPACT

APPROVED ON DoD ANTI-RAM LIST, BARRIER CERTIFIED UP TO 34 FEET CLEAR SPAN LENGTHS

ELEVATION



KEY CAPABILITIES:

1. BARRIER IS DELIVERED AS A "KIT" WITH PREFABRICATED PARTS ON PALLET. (SEE SHEET 6 OF 6). FASTENERS AND TOOLS ARE INCLUDED. SET UP IN FOUR (4) HOURS. ADJUSTABLE COMPONENTS CONNECT TO IN-COUNTRY CONCRETE BLOCKS
2. BARRIER ARM IS MANUALLY RAISED AND LOWERED, OR ROTATED HORIZONTALLY BY ONE (1) PERSON.
3. MANUAL LOCKING OF BARRIER ARM.
4. BARRIER ARM IS HIGHLY VISIBLE AND PROVIDES A VISUAL DETERRENT.
5. EASILY RELOCATED USING A FORKLIFT WITHOUT REQUIRING DISASSEMBLY. SURFACE SET.
6. BARRIER PROVIDES BI-DIRECTIONAL STOPPING CAPABILITY. (CERTIFIED TO STOP INBOUND AND OUTBOUND VEHICLE IMPACTS)
7. STAINLESS STEEL AND HOT DIPPED GALVANIZED STEEL.
8. HOOK SIDE AND PIVOT SIDE OF BARRIER CAN BE REVERSED.
9. ACCOMMODATES DIFFERENCE IN GRADE ELEVATIONS BETWEEN "HOOK SIDE" AND "PIVOT SIDE" (NON-ISSUE)
10. BARRIER HAS MODULAR COMPONENTS THAT CAN BE DISCONNECTED AND REPLACED, IF DAMAGED BY IMPACT.
11. CUSTOM COLORS ARE AVAILABLE.
12. KITS ARE LIGHT WEIGHT AND CAN BE DELIVERED AIR FREIGHT. COMPONENTS FIT TO DIFFERENT BLOCK SIZES PROVIDED IN COUNTRY.



BARRIER1 SYSTEMS, INC.

8015 THORNDIKE ROAD
GREENSBORO, NC 27409
(336) 617-8478 (336) 617-8471 FAX
mlamore@barrier1.us www.barrier1.us

THE DRAWINGS AND INFORMATION CONTAINED HEREIN ARE PROPRIETARY AND CONFIDENTIAL AND FOR USE BY ONLY PERSONS WORKING ON PROJECT WITH BARRIER1 SYSTEMS, INC. DO NOT COPY OR REPRODUCE. ALL RIGHTS RESERVED.

MANUALLY OPERATED
DROP ARM CRASH BEAM
PREASSEMBLED & MOBILE

SAMPLE DRAWINGS

SHEET: 2 OF 6

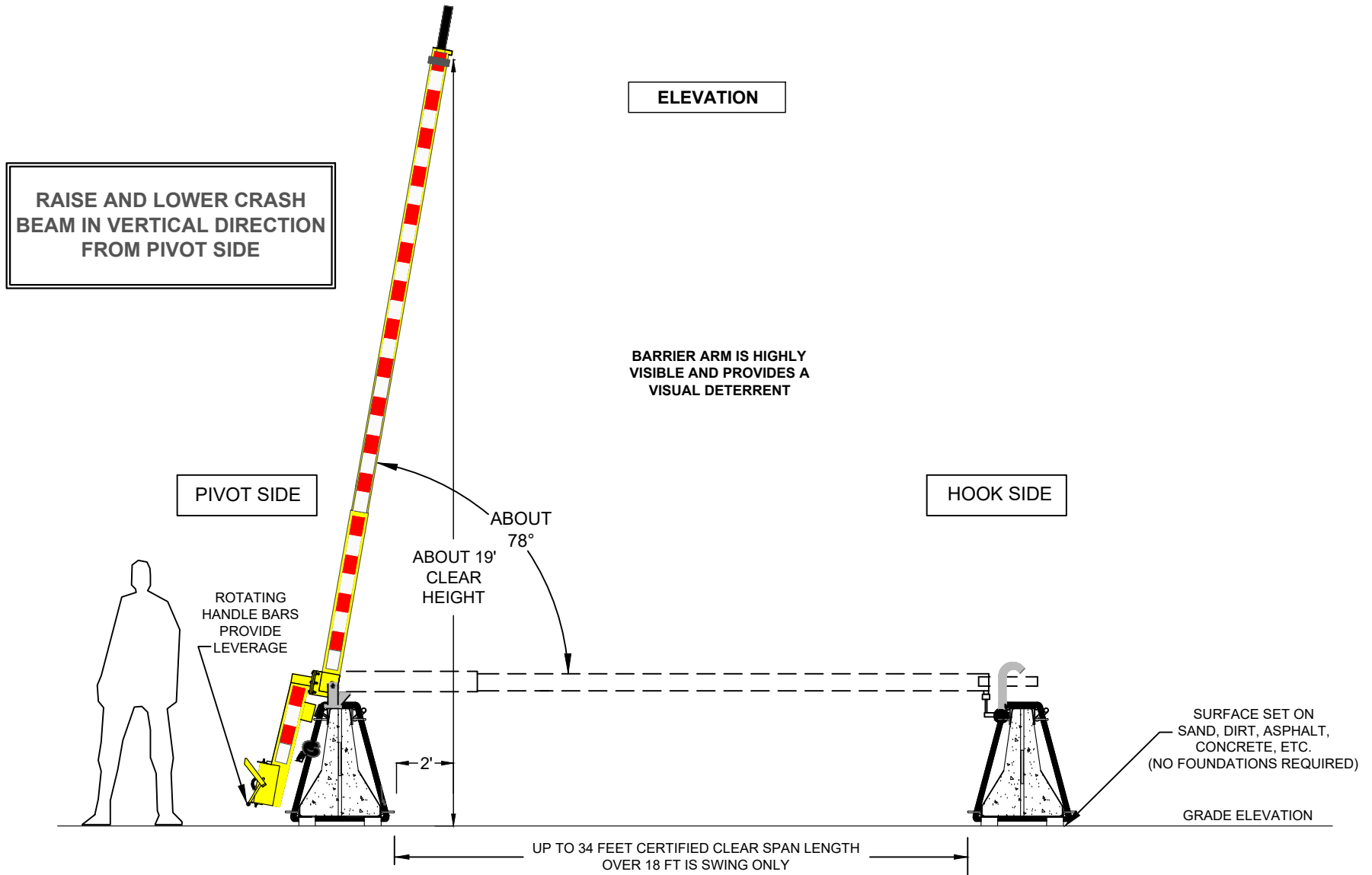
20190226-06-PD

SCALE: N.T.S.

KIT BASED CRASH BEAM - MODEL KBVB-MAN (MANUALLY OPERATED AND MOBILE)

ASTM F2656-07 M50 (K12) CERTIFIED - STOPS 15,000 LB. VEHICLE AT 50 MPH IMPACT

APPROVED ON DoD ANTI-RAM LIST, BARRIER CERTIFIED UP TO 34 FEET CLEAR SPAN LENGTHS



BARRIER1 SYSTEMS, INC.

8015 THORNDIKE ROAD
GREENSBORO, NC 27409
(336) 617-8478 (336) 617-8471 FAX
mlamore@barrier1.us www.barrier1.us

THE DRAWINGS AND INFORMATION CONTAINED HEREIN ARE PROPRIETARY AND CONFIDENTIAL AND FOR USE BY ONLY PERSONS WORKING ON PROJECT WITH BARRIER1 SYSTEMS, INC. DO NOT COPY OR REPRODUCE. ALL RIGHTS RESERVED.

MANUALLY OPERATED
DROP ARM CRASH BEAM
PREASSEMBLED & MOBILE

SAMPLE DRAWINGS

SHEET: 3 OF 6

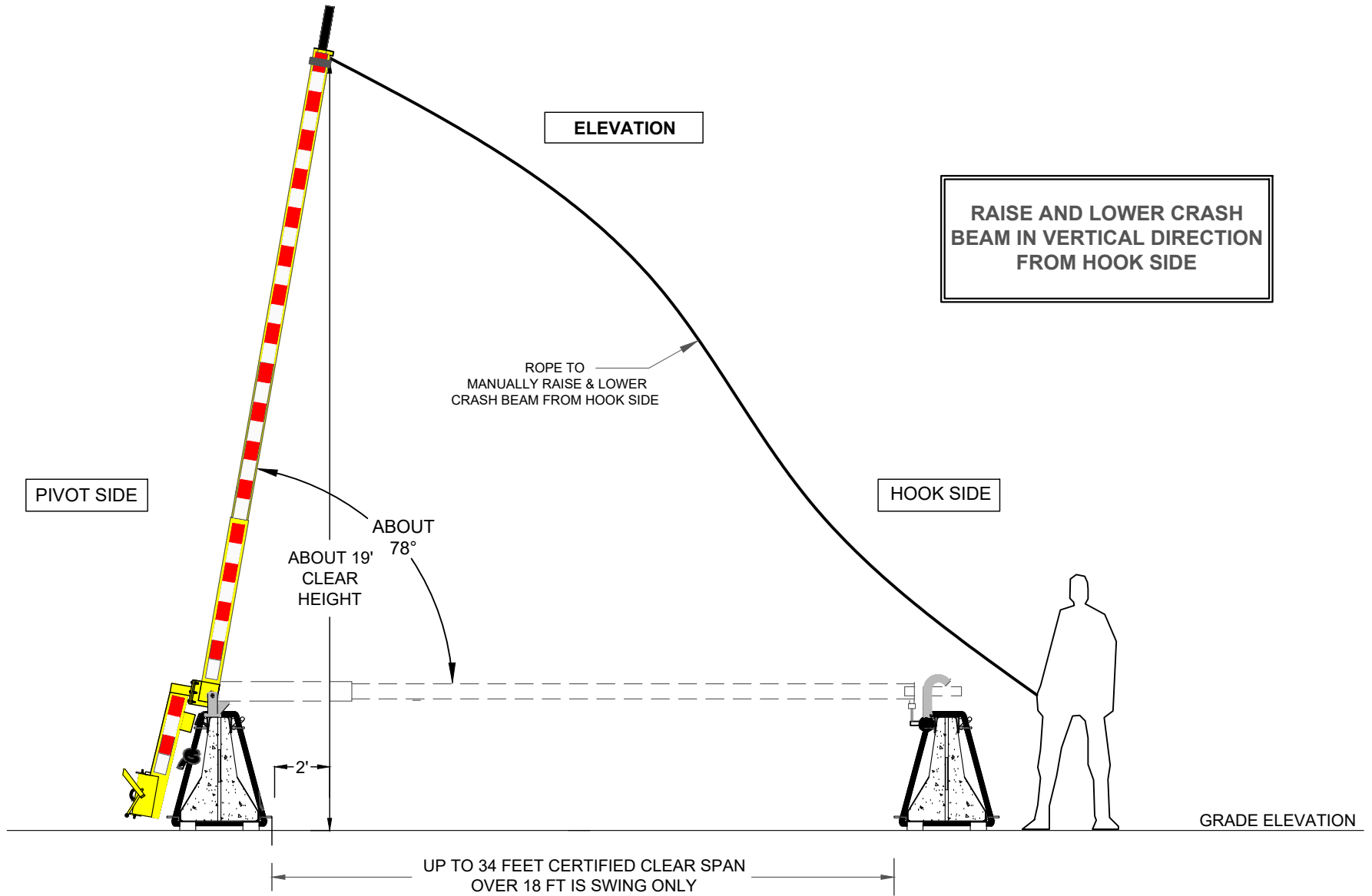
20190226-06-PD

SCALE: N.T.S.

KIT BASED CRASH BEAM - MODEL KBVB-MAN (MANUALLY OPERATED AND MOBILE)

ASTM F2656-07 M50 (K12) CERTIFIED - STOPS 15,000 LB. VEHICLE AT 50 MPH IMPACT

APPROVED ON DoD ANTI-RAM LIST, BARRIER CERTIFIED UP TO 34 FEET CLEAR SPAN LENGTHS



BARRIER1 SYSTEMS, INC.

8015 THORNDIKE ROAD
GREENSBORO, NC 27409
(336) 617-8478 (336) 617-8471 FAX
mlamore@barrier1.us www.barrier1.us

THE DRAWINGS AND INFORMATION CONTAINED HEREIN ARE PROPRIETARY AND CONFIDENTIAL AND FOR USE BY ONLY PERSONS WORKING ON PROJECT WITH BARRIER1 SYSTEMS, INC. DO NOT COPY OR REPRODUCE. ALL RIGHTS RESERVED.

MANUALLY OPERATED
DROP ARM CRASH BEAM
PREASSEMBLED & MOBILE

SAMPLE DRAWINGS

SHEET: 4 OF 6

20190226-06-PD

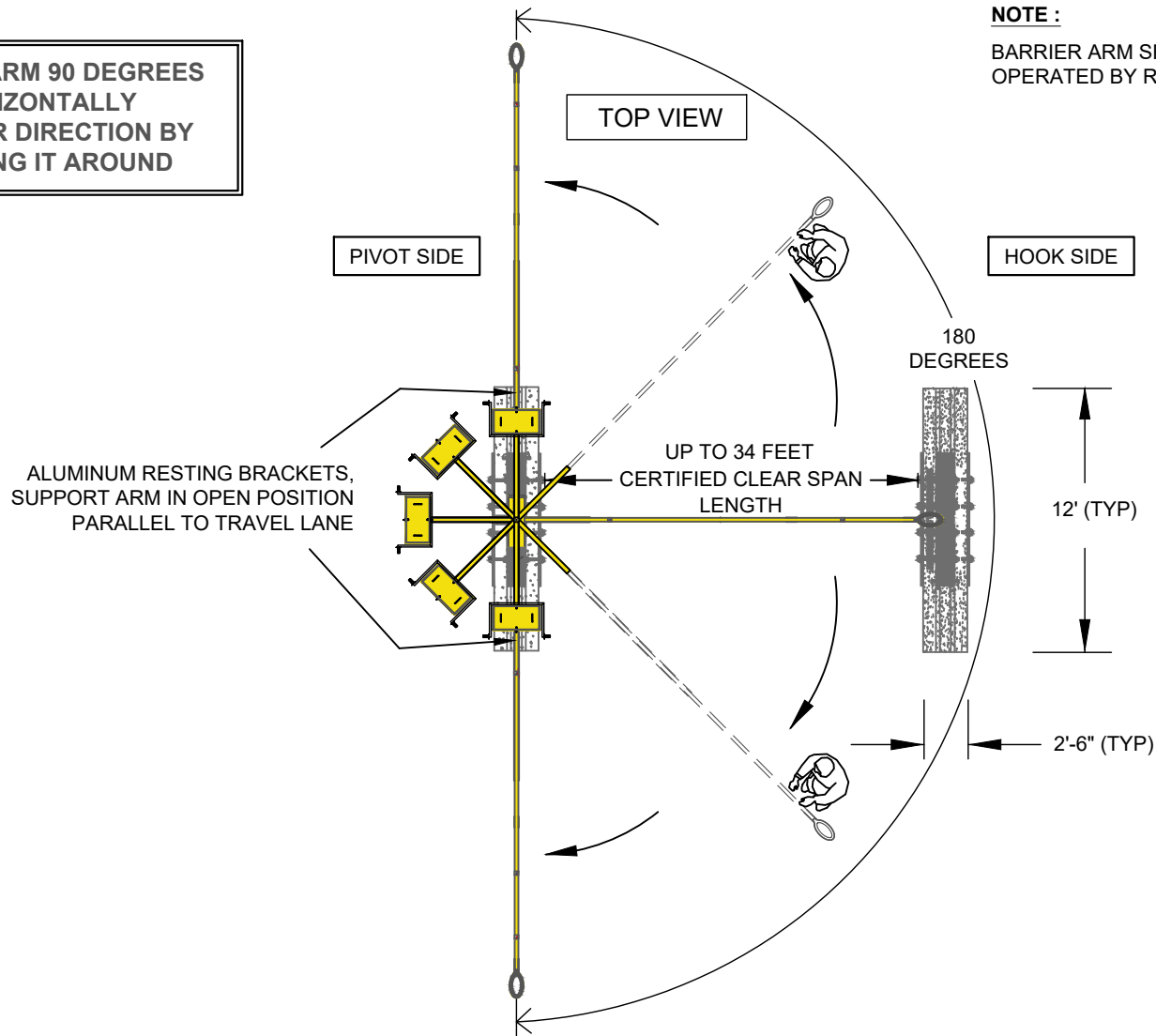
SCALE: N.T.S.

KIT BASED CRASH BEAM - MODEL KBVB-MAN (MANUALLY OPERATED AND MOBILE)

ASTM F2656-07 M50 (K12) CERTIFIED - STOPS 15,000 LB. VEHICLE AT 50 MPH IMPACT

APPROVED ON DoD ANTI-RAM LIST, BARRIER CERTIFIED UP TO 34 FEET CLEAR SPAN LENGTHS

ROTATE ARM 90 DEGREES
HORIZONTALLY
IN EITHER DIRECTION BY
WALKING IT AROUND



NOTE :

BARRIER ARM SPAN LENGTHS EXCEEDING 18 FEET ARE OPERATED BY ROTATING ARM HORIZONTALLY ONLY.



BARRIER1 SYSTEMS, INC.

8015 THORNDIKE ROAD
GREENSBORO, NC 27409
(336) 617-8478 (336) 617-8471 FAX
mlamore@barrier1.us www.barrier1.us

THE DRAWINGS AND INFORMATION CONTAINED HEREIN ARE PROPRIETARY AND CONFIDENTIAL AND FOR USE BY ONLY PERSONS WORKING ON PROJECT WITH BARRIER1 SYSTEMS, INC. DO NOT COPY OR REPRODUCE. ALL RIGHTS RESERVED.

MANUALLY OPERATED
DROP ARM CRASH BEAM
PREASSEMBLED & MOBILE

SAMPLE DRAWINGS

SHEET: 5 OF 6

20190226-06-PD

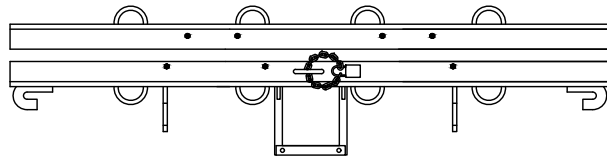
SCALE: N.T.S.

KIT BASED CRASH BEAM - MODEL KBVB-MAN (MANUALLY OPERATED AND MOBILE)

ASTM F2656-07 M50 (K12) CERTIFIED - STOPS 15,000 LB. VEHICLE AT 50 MPH IMPACT
 APPROVED ON DoD ANTI-RAM LIST, BARRIER CERTIFIED UP TO 34 FEET CLEAR SPAN LENGTHS

PARTS, COMPONENTS, AND FASTENERS ARE SHIPPED ON PALLET

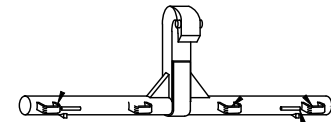
TOP VIEW
STAINLESS STEEL



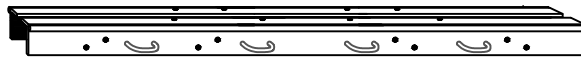
CABLE WRAPS



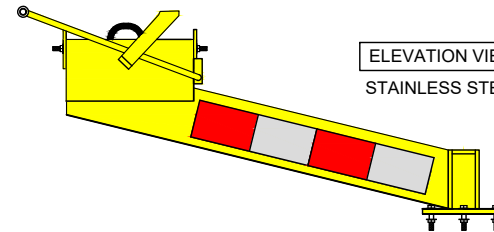
ISOMETRIC VIEW
HOT DIP GALVANIZED



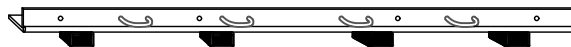
ISOMETRIC VIEW
STAINLESS STEEL



ELEVATION VIEW
STAINLESS STEEL



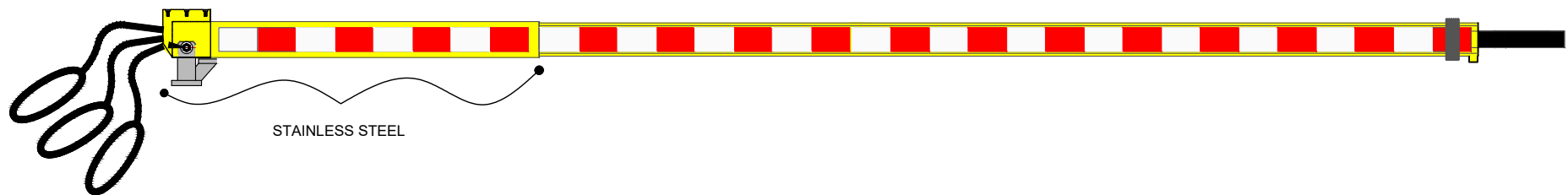
ELEVATION VIEW
STAINLESS STEEL



KEY CAPABILITIES :

1. COMPONENTS ARE ATTACHED TO IN-COUNTRY CONCRETE BARRIERS. COMPONENTS ARE ADJUSTABLE TO FIT VARYING SIZES OF CONCRETE BARRIERS.
2. SPECIALIZED FASTENERS AND TOOLS ARE PROVIDED IN KIT.
3. STEP BY STEP INSTRUCTIONS ARE PROVIDED. SET UP IN ABOUT 4 HOURS.

ELEVATION VIEW



STAINLESS STEEL



BARRIER1 SYSTEMS, INC.

8015 THORNDIKE ROAD
 GREENSBORO, NC 27409
 (336) 617-8478 (336) 617-8471 FAX
 mlamore@barrier1.us www.barrier1.us

THE DRAWINGS AND INFORMATION CONTAINED HEREIN ARE PROPRIETARY AND CONFIDENTIAL AND FOR USE BY ONLY PERSONS WORKING ON PROJECT WITH BARRIER1 SYSTEMS, INC. DO NOT COPY OR REPRODUCE. ALL RIGHTS RESERVED.

MANUALLY OPERATED
 DROP ARM CRASH BEAM
 PREASSEMBLED & MOBILE

SAMPLE DRAWINGS

SHEET: 6 OF 6

20190226-06-PD

SCALE: N.T.S.