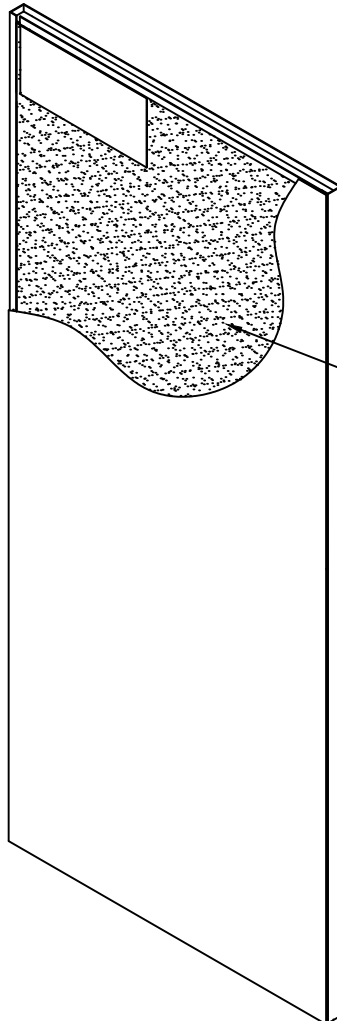


ASSA ABLOY

1-3/4" FORCED ENTRY / LEVEL 8 BULLET RESISTANT DOOR (FE8) AND FRAME SYSTEM
DOOR IS SEAMLESS WITH BEVELED EDGES & HANDED 5 YEAR WARRANTY

D23-1



PROPRIETARY BALLASTIC ARMOR

Vertical stiffeners placed to support the bullet resistant armor.

*Suggested Use:
 Interior or Exterior ...*

*Openings For The Protection Of:
 Classrooms K-12, Universities, Healthcare, Mission Critical Buildings, Government, Military, Executive Offices, Guard Houses, Control Rooms and anywhere the highest level of protection and durability are important considerations.*

*Forced entry resistant exit device with multi-point deadbolt system, Pemko HG3505 stainless steel continuous hinge with security studs and fire pins, and 12 gage stainless steel forced entry threshold provided with assembly.
 Exit device, continuous hinge, and threshold will be installed.*

DOOR DESIGNS



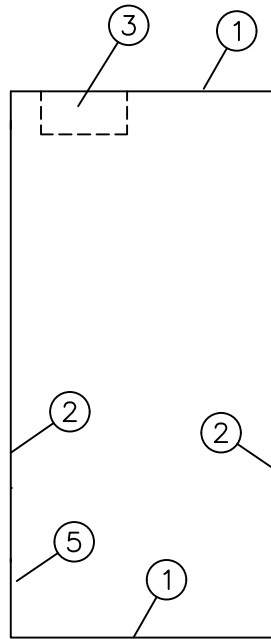
F

TEST METHODS AND QUALIFICATIONS

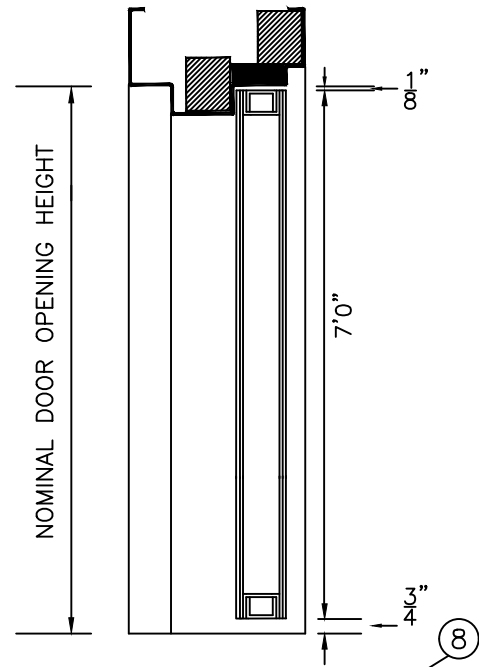
- Forced Entry and Ballistic Resistance of Structural Systems-Doors were tested per DoS ST-STD.01.01 shot with 5.56 and 7.62 rounds and then attacked by a six man Concentrated Assault Team for 15 minutes on the lock edge, 15 minutes on the hinge edge, 15 minutes on the center of the door.
- Tested in accordance with standard for safety UL752: Standard for Bullet Resistant Equipment
- ANSI/BHMA A156.1: Butts and Hinges
- ASTM F3038-14: Standard test method for timed evaluation of Forced Entry Resistant Systems
- Complies with Department of State SD STD-01.01 Rev G (amended) as tested by OBL Lab
- Complies with the following portions only of HMMA 862-13: 1) Bullet Resistance Tests, 5) Forced Entry Test and Security Rating Classifications 1, 2, and 3 (15 minute forced entry portion and bullet resistance Level 8)

10/17/19

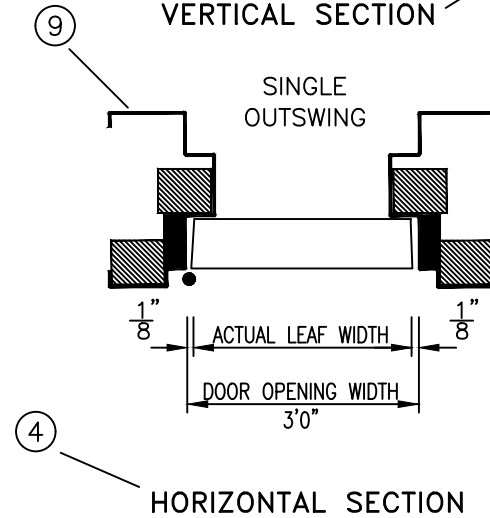
D23-2



ELEVATION



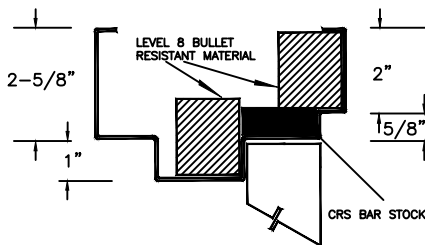
VERTICAL SECTION



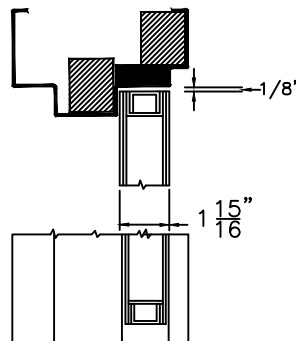
HORIZONTAL SECTION

Horizontal and vertical sections shown above depict outswing armor conditions.

TYPICAL FORCED ENTRY FRAME PROFILE (9)

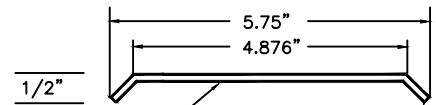


VERTICAL SECTION (8)



OUTSWING

SILL DETAIL



12 GAGE STAINLESS STEEL FORCED ENTRY THRESHOLD PROVIDED AND INSTALLED

10/17/19

(Conversion: 1" = 25.4 mm, e.g., 1-3/4" = 44.45 mm)



ASSA ABLOY

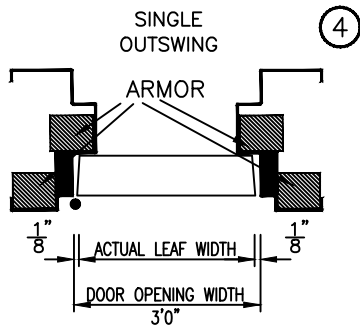
Experience a safer
and more open world

TECH-DATA

FORCED ENTRY / LEVEL 8 BULLET RESISTANT ASSEMBLY

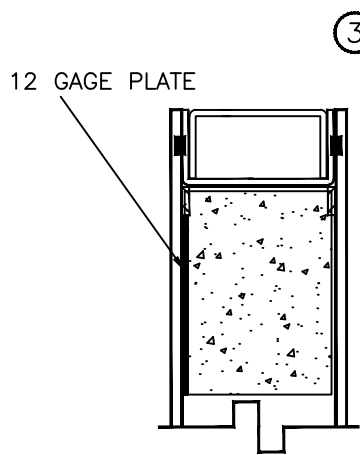
D23-3

HORIZONTAL SECTION



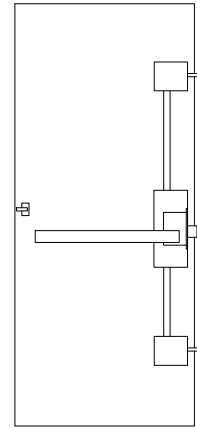
PEMKO HG3505 STAINLESS STEEL CONTINUOUS HINGE WITH SECURITY STUDS AND FIRE PINS PROVIDED & INSTALLED.

CLOSER REINFORCEMENT



LATCHING HARDWARE PREPARATION

FORCED ENTRY RESISTANT EXIT DEVICE WITH MULTI-POINT DEADBOLT PROVIDED AND INSTALLED.

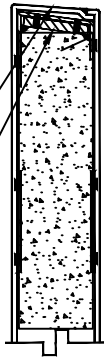


STANDARD HINGE PREPARATION FOR

PEMKO HG3505 STAINLESS STEEL CONTINUOUS HINGE WITH SECURITY STUDS & FIRE PINS

BEVELED HINGE EDGE

3/16" HINGE REINFORCEMENT PLUG WELDED TO EDGE CHANNEL



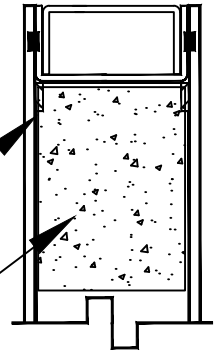
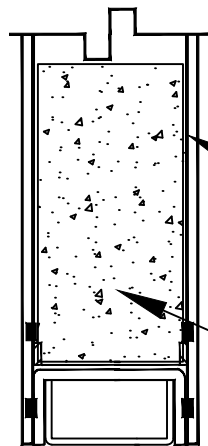
12 GAGE STEEL END CHANNELS

INVERTED TOP & BOTTOM CHANNELS WELDED TO BOTH FACE SHEETS

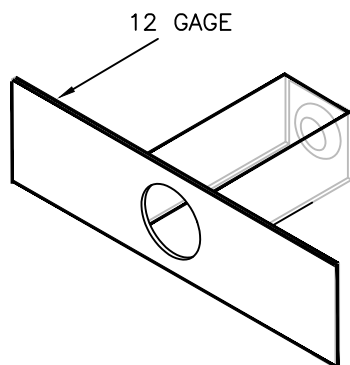
12 GAGE TOP & BOTTOM CAPS WELDED INTO END CHANNEL WITH 1" STITCH WELDS 2" ON CENTER.

12 GAGE CONTINUOUS LOCK EDGE CHANNEL SPOT WELDED TO DOOR SKIN

LEVEL 8 BALLISTIC ARMOR



EXISTING OPENING ANCHOR



PUNCHED AND DIMPLED FOR 3/8" BOLT. BOLTS BY OTHERS.

ASTRAGAL STRIP

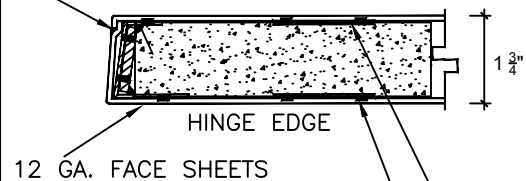
ATTACHED TO EXTERIOR LOCK SIDE FACE



1-1/2" X FULL HEIGHT 16 GAGE ASTRAGAL CONTINUOUSLY WELDED FULL HEIGHT OF DOOR

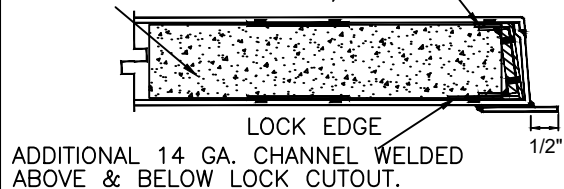
DOOR CONSTRUCTION

BOTH EDGE SEAMS CONTINUOUSLY WELDED



BOTH EDGES HAVE 12 GA. CONTINUOUS EDGE CHANNELS SPOT WELDED TO FACE SHEETS.

LEVEL 8 BALLISTIC ARMOR/CORE



NOTE: ANCHORS MAY VARY IN APPEARANCE BASED ON THE PLACEMENT OF ARMOR.

Ceco Door

ASSA ABLOY

Experience a safer and more open world

10/17/19

D23-4

PRODUCT SPECIFICATIONS:

1-3/4" thick Forced Entry Level 8 bullet resistant doors and frames shall be provided by Ceco Door Products. Doors & frames shall provide bullet resistance in accordance with UL 752. Assemblies are compliant to Department of State Standard SD-STD-01.01 Rev. G (amended). Assembly is tested to withstand 15 minutes of simulated "mob" attack and resistant to 5.56 M193, 5.56 M855 and 7.62 M80 ballistic rounds. Assembly is equipped with hollow metal door, frame, noted hardware, and crated for shipment. Door weight only is 24 pounds per square foot.

STANDARD SIZE NOMINAL DOOR OPENING

WIDTH	HEIGHT
SINGLE	
3'-0"	7'-0"

Forced Entry Bullet Resistant Level 8 doors are seamless design. Door edges are continuously welded seams and ground smooth. No seams are visible on faces or vertical edges. Face sheets are commercial quality 12 gage steel conforming to ASTM A1008 or optional hot-dipped galvanized or galvanized steel (conforming to ASTM A924 and A653) - see chart below. 3'0" x 7'0" only.

FIRE RATING
NOT AVAILABLE

Forced Entry Bullet Resistant Level 8 frames are custom double rabbet profile 12 gage steel. Frame depths vary from 5-3/4" through 14" of continuous welded construction. Mute holes are not provided. Adhesive silencers should be applied by others. Frames are punched and dimpled for existing wall anchors. Anchor bolts by others.

Hardware Provisions: Pemko HG3505 stainless steel continuous hinge with security studs and fire pins. The door hinge & lock edge has a standard bevel (1/8" in 2") and is prepared for a forced entry multi-point exit device with deadbolt system. Aformentioned hardware to be provided and installed at service center.

CLASSIFIED FORCED ENTRY AND
BULLET RESISTANT LABELS
NOT AVAILABLE

Paint: All exposed surfaces of door and frame shall be provided with one coat of oven-cured neutral color, rust inhibitive prime paint. The primer coat is a preparatory base for necessary finish painting. Factory finish paint is not available.

Warranty: 5 YEARS

MATERIAL

DOOR FACE SHEETS	BULLET RESISTANCE LEVEL	DOOR & FRAME A40 GALVANNEAL	DOOR & FRAME A60 & G90 GALVANIZED	FRAME MATERIAL
12 GAGE STEEL	8	STD	OPT	12 GAGE

(Conversion: 1" = 25.4 mm, e.g., 1-3/4" = 44.45 mm)

10/17/19

